

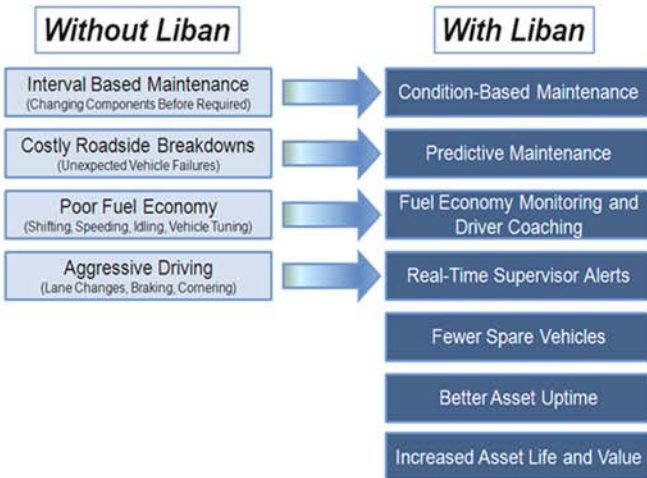
CUSTOMER BENEFITS

Liban's customers receive payback for their investment through operational cost savings



Fuel 10-20%	Maintenance 10-30%	Safety 10-40%	Other
<ul style="list-style-type: none"> • Driver Coaching • Vehicle Tuning • Progressive Shifting • Idle Time Reduction • Speed Monitoring • Fleet Statistics 	<ul style="list-style-type: none"> • Predictive • Condition-Based • Breakdown Prevention • Improved Asset Life and Residual Value • Advanced Diagnostics 	<ul style="list-style-type: none"> • Insurance Costs • Driver Monitoring • Accident Reconstruction 	<ul style="list-style-type: none"> • Fleet Efficiency Monitoring • Asset Specification • Report Automation • Regulatory Compliance • Maintenance Records • Personnel Training

Improved Operational Efficiency = Higher Customer Satisfaction



For additional information or a demo contact our sales team at sales@libaninc.com

LIBAN

FLEET MANAGEMENT SOLUTIONS

LIBAN

Liban, Inc.
125 Tech Park Drive
Rochester, New York 14623
www.libaninc.com
info@libaninc.com

phone: 585.272.8007 fax: 585.239.6019

©2010 Liban, Inc. All Rights Reserved.

COMPANY OVERVIEW

Liban is a producer of vehicle monitoring systems that include advanced driver monitoring, condition-based maintenance, and predictive maintenance. Liban monitors the health of the vehicle and the drivers' behavior in real-time. The unique in-cab coaching system improves the drivers' fuel economy and safety. The vehicle software assesses the vehicle health and predicts failures within the major vehicle subsystems. These features combine to reduce a typical fleet operator's fuel, maintenance, and safety expenses by more than \$3000 per truck per year.

MARKETS

Liban is currently focused on fleet maintenance applications in the following industries:

- Commercial fleets with Class 6-8 trucks
- Public Transit Authorities
- Military

PRODUCTS

Liban's products improve a fleet's fuel economy, extend the life of its assets, and enhance overall safety. This is achieved through a combination of sophisticated driver monitoring, a unique driver coaching system, predictive maintenance, and advanced communications technologies. The product features include:

- Integrated driver coaching program that includes classroom training, customized progress reports and real-time in-cab feedback for the driver.
- Condition-based and predictive maintenance technologies that help to optimize service intervals and avoid breakdowns.
- Electronic Onboard Data Recorder function that continually records every driver action as well as the vehicle's mechanical condition.
- A communications Point-of-Presence that creates a Wi-Fi hotspot in and around the vehicle.

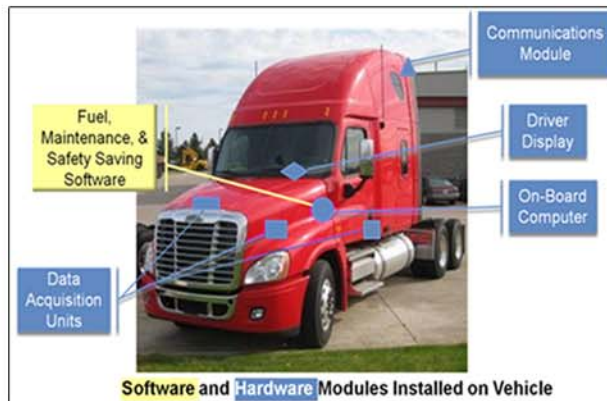
Liban offers two versions of the system, *DiagKnowSys™* and *FleetKnowSys™*.

DiagKnowSys™ System

A solution for fleets with existing telematics solutions that provides a detailed understanding of the mechanical condition of the truck and how the driver is operating it. The system provides actionable information for all stakeholders (drivers, maintainers, and fleet managers) through a series of web based "dashboards" and customized reports. Liban's system is designed to work with the most popular commercial standards, J1939 and J1708. *DiagKnowSys™* goes far beyond reporting cryptic Diagnostic Trouble Codes (DTC) by presenting specific recommendations for the maintenance personnel. The information generated by the *DiagKnowSys™* System includes condition-based and predictive maintenance, as well as advanced driver performance statistics that help improve the operation of the fleet.

FleetKnowSys™ System

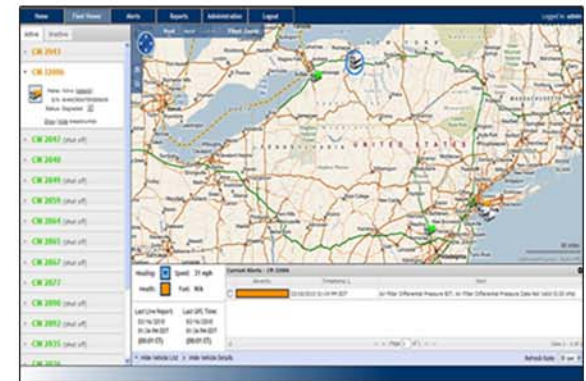
A comprehensive fleet management solution that includes all the features of the *DiagKnowSys™* system plus GPS location, a "dashboard" for dispatchers, and a more extensive communications package to enhance fleet operations. *FleetKnowSys™* gives fleet operators all of the tools required to minimize fuel, maintenance, and safety expenses.



FleetViewer™ Customer Portal

Liban's customers enjoy access to its secure customer portal. The website includes customized dashboards that provide critical information to each stakeholder within the fleet. This includes operations personnel, dispatchers, driver supervisors, maintenance personnel, and operations executives such as the COO, CFO, and CIO. The website also includes historical reports that detail driver, vehicle, and overall fleet performance.

FleetViewer™ Customer Portal includes user dashboards and report generation tools



DiagKnowSys™ and *FleetKnowSys™* monitors a wide variety of the vehicle's major components

	Basics Speed, Fuel Economy, Range, Tilt, etc.
	Environmental Interior/Exterior Temperature, Barometric Pressure, etc.
	Engine Air Intake, Oil, Cooling, Fuel System, etc.
	Electrical Battery, Alternator, Load, etc.
	Drive Train Transmission, Transfer Case Differential, Traction Control, etc.
	Others Brakes, Hydraulics, Tires, Emission Systems, Trailers, etc.